

Laser Engraving Machine

MG380 Hybrid Laser Engraver

Enjoy the best combination
of CO2 laser technologies



MG380 Hybrid
12100 Laser Cutter

Source of Digital Solutions...

Digital Star Qatar has been leading the digital scene in Doha for over 10 years, as suppliers and distributors of signage, advertising and LED solutions. Our commitment to providing the best quality machinery and top-notch technology from around the world has enabled us to set new and improved standards in sign and digital printing industries. DSQ has developed into a true trendsetter and a reliable destination for customers seeking exhaustive custom and wholesale solutions. From sign makers, digital print houses, POS/POP makers, retail fit-out companies, to exhibition stand builders, construction companies and glass and aluminum fabricators industries, we promise to take your business to unprecedented levels



P3-5 PRODUCT OVERVIEW



P7-8 PRODUCT SPECIFICATION



P9-10 TERMS AND CONDITIONS



Laser Engraving Machine

MG380Hybrid Laser Engraver



The GCC LaserPro MG380Hybrid is equipped with metal laser tube and glass laser tube at the same time which allow users to produce superior engraving and cutting work piece. This all-in-one machine saves your storage space and makes your profit maximum.



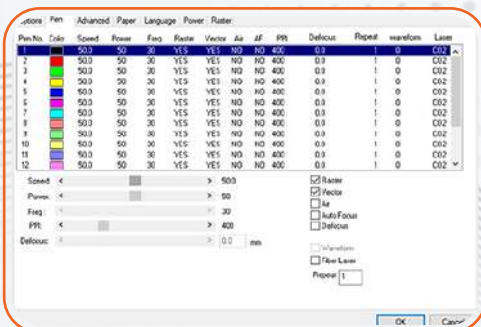
RoHS Compliance

All GCC products are RoHS-compliant (the European Parliament Directive 2002/ 95/ EC, Restriction of Hazardous Substances) and lead-free (pb free). GCC will continue to concern and provide environmentally friendly products to protect the earth for our further generation.



Dual Laser Tubes (Patented)

Possesses the high engraving quality of RF driven laser tubes while taking advantage of low per-wattage cost of DC excited CO2 glass laser tubes to deliver clear cutting edge on thick materials.



Innovative Software Features

Simple step engraving and cutting laser parameters in GCC LaserPro driver, MG380Hybrid will automatically use different laser tubes to do its best output quality. A real smart laser engraver/cutter ever.



Emergency Stop

Big red button located on the top of the machine allows operators to stop the laser and the motion carriage immediately to provide a highly safe operational environment.



Motion System with DC Servo Motor

The GCC LaserPro MG380Hybrid utilizes a high speed closed-loop DC servo motor for precise and fast carriage movement to ensure exceptionally accurate cutting outputs.



AutoFocus (Patented)

Patented Autofocus Gauge adjusts the laser engraver to the precise focal point on the engraving area automatically. The Autofocus is the most effective lens-focusing tool that prevents human error when exact measurement of distance from the surface of the working material is needed.



Programmable Origin

Easy-to-use position modes allow the operator an effortless way to setup a job with Drag-N-Engrave. Repetitive workflows can be drastically simplified by relocating the origin position to any desired location.



Easy-to-use Control Panel

Embrace total solution in one machine. Innovative GCC LaserPro MG380Hybrid deliver superior engraving and cutting result by its high end technology.



Rigid and Reliable Construction

Solid machine structure ensures superior output quality and motion stability for superb performance.



Superb Engraving and Cutting Quality

Designed for simplifying complex tasks, the GCC LaserPro MG380Hybrid's user-friendly interface is a great facilitator to provide powerful function settings.



AAS Contour Cutting Device (Patented) (Optional)

Developed by LaserPro, AAS is an exceptionally user-friendly operation which offers accurate and faultless contour cutting by automatically tracking the position of graphics.

PRODUCT SAMPLES



MDF



WOOD CUTTING



STONE/ TILE



LEATHER



ACRYLIC





TEXTILE/ APPAREL

MODEL: GCC MG380HYBRID-12100

Laser Wattage	RF driven metal laser tube: 12W DC driven glass laser tube: 100W
Laser Source	Sealed CO2 Laser
Laser Cooling	RF driven metal laser tube: Air Cooled / DC driven glass laser tube: Water Cooled
Working Area	960 x 610 mm (38 x 24 in.)
Max. Part Size	1041 x 635 x 165 mm (41 x 25 x 6.5 in.) - Closed
(L x W x H)	1041 x ∞ x 165 mm (41 x ∞ x 6.5 in.) - open
Table Size	1085 x 750 mm (42.7 x 29.5 in.)
Dimensions	1750 x 1242 x 1017 mm (68.9 x 48.9 x 40 in.)
Driving Motor	Closed-loop DC Servo Control
Maximum Motor Speed	40 IPS
Speed Control	Adjustable from 0.1~100% (Up to 16 color-linked speed settings per job)
Power Control	Adjustable from 0~100% (Up to 16 color-linked power settings per job)
Engraving Capability	256-level gray scale image processing capability
Distance Accuracy	0.254 mm or 0.1% of move, whichever is greater
Resolution (DPI)	Available 125, 250, 300, 380, 500, 600, 760, 1000
Z-Axis Movement	Automatic
Focus Lens	Standard 2.0", optional 1.5", 3"

SPECIFICATION

Interface	10 Base-T Ethernet  USB Type-A 2.0  - For USB storage (Max. 32GB capacity, FAT file system) USB Type-B 2.0 - For connecting with the computer
Memory Buffer	32MB standard
Safety	Class I Laser Product Compliant with EN60825 Class II Laser Product Compliant with CDRH 2006/42/EC Machinery Directive Compliance Class 4 Laser Product Compliant with CDRH with the optional pass-through door module
Operation Voltage	200-240VAC, 50/60Hz auto switching, Max. 8A
Water Chiller	External water chiller required
External Exhaust System	with minimum flow rate 800m ³ /h (CFM 471 ft ³ /min) is required, 2.3kPA negative pressure (Pure-Air PA-1500FS @ 4" & 8" exhaust port)

1. Payment to be made in QR currency.
2. Payment Terms: As mentioned in Quotation.
3. Bank Details: -Bank Name: Qatar Islamic Bank
Branch: Al Khour Branch
Beneficiary Name: Digital Star Qatar
Acc #: (0111453200015)
Swift Code: (QISB - QAQA)
IBAN: QA16QISB000000000111453200015.
4. Bank Charges: Any bank charges relevant to the above transactions will be to your account.
5. Any charges, duties, taxes or levies at the ports of entry will be to our account.
6. The charges of lodging, boarding and local conveyance of the technician will be to our account.
7. Any required electrical, mechanical & civil site preparation should be done by the customer according to our engineer's requirements.
8. Digital Star Qatar will not be held responsible for delays caused by any damage in the equipment due to shipment, unloading accidents and any related reasons, which is beyond our control.
9. Warranty will be of 12 months from date of installation from Digital Star Qatar. Wear & tear, consumables are exempted and warranty can be claimed only if you use the services from Digital Star Qatar.
10. Service will be free of cost within 12 months from the date of installation.

11. Any claim will be invoice directly to you then we will send for claiming procedure which will take 45-60 days, if the claim got approved credit note will issued directly.
12. Quotation will be valid for 7 days from here on.
13. Delivery: As mentioned in quotation



DIGITAL STAR QATAR ديجيتال ستار قطر

DOHA | QATAR | P O BOX: 47663

 +974 448 34 486

 info@digitalstarq.com

 +974 441 63 788

 www.digitalstarq.com