

# Laser Engraving Machine

## **S400 Laser Engraver**

Inherit all the advantages from Spirit Hybrid, a brand new machine - S400 features 140ips processing speed by DC servo motor, innovative touch panel, user-friendly interface and a modern good looking design.



**GCC**

**S400**  
Laser Engraver

# Source of Digital Solutions...

Digital Star Qatar has been leading the digital scene in Doha for over 10 years, as suppliers and distributors of signage, advertising and LED solutions. Our commitment to providing the best quality machinery and top-notch technology from around the world has enabled us to set new and improved standards in sign and digital printing industries. DSQ has developed into a true trendsetter and a reliable destination for customers seeking exhaustive custom and wholesale solutions. From sign makers, digital print houses, POS/POP makers, retail fit-out companies, to exhibition stand builders, construction companies and glass and aluminum fabricators industries, we promise to take your business to unprecedented levels



**P3-6** PRODUCT OVERVIEW



**P7-8** PRODUCT SPECIFICATION



**P9-10** TERMS AND CONDITIONS



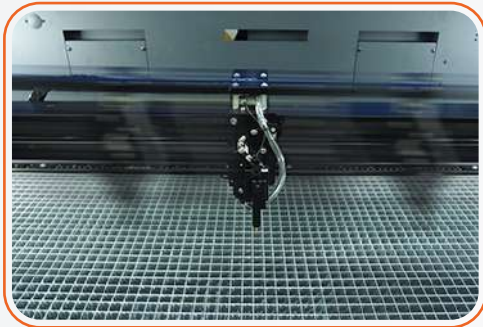
CONTENTS

# Laser Engraving Machine

## S400 Laser Engraver



Together with SmartFLOW™ dust prevention technology and SmartLID™ easy access invention, S400 presents you the highest throughput and precise laser engraving and cutting quality. GCC S400 makes all your imaginations to life at the speed of light.



### Perfect Cutting & Engraving Throughput

Maximum 140ips processing speed with powerful DC servo motor to boost productivity while maintaining precision.



### Pass-through Front to Rear Doors (Optional)

A design with doors on both ends to accommodate extremely long working pieces, front door without the need for a screwdriver.



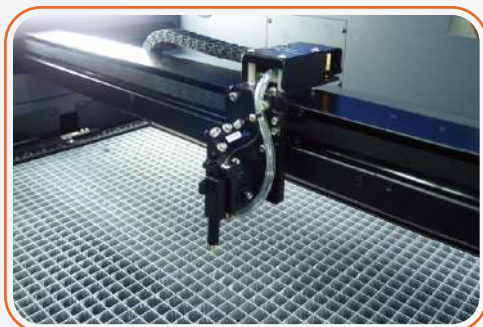
### SmartLID™ Easy Access

Easy access design simplifies the maintenance job.



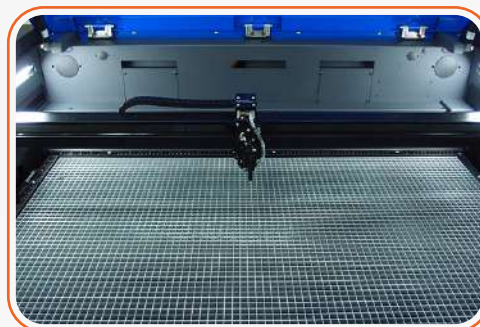
### SmartFLOW™ Technology

SmartFLOW™ invention creates a perfect Air Flow to enhance the vacuum effect & bring out the dust completely while working.



### SmartACT™ (Patented)

Ground-breaking technology that reduce the ramping process, the job running time, which translates into higher productivity.



### SmartLIGHT

Built-in LED light module illuminates the working space & makes every engraving detail easy to see.



### SmartSEAL™ Technology

New gantry design to prevent dust, the easy take-off cover also makes the maintenance a lot easier.



### Intuitive Touch Screen

Operation is easy and intuitive with the 4" touchscreen.



### User friendly driver interface

Starting from end users' view, GCC driver evolve into a brand new design with the intuitive interface to favor each user.



### Stamp Mode With Shoulder Level Function

E200 stamp mode with shoulder level function enables you to produce a professional stamp easily.

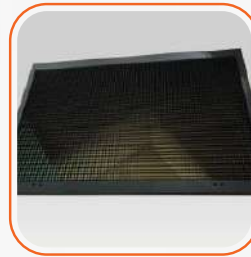
# OPTIONAL ITEMS



Pass-Through  
Door Switch  
Module



Smart Vision™  
Pro CCD



Multiple Table  
Choices



Air Compressor  
Unit



Rotary  
Attachment /  
Rotary Chuck



Fume Extraction  
System



External Signal  
Indicator



SmartGUARD™  
Fire Alarm (Patented)

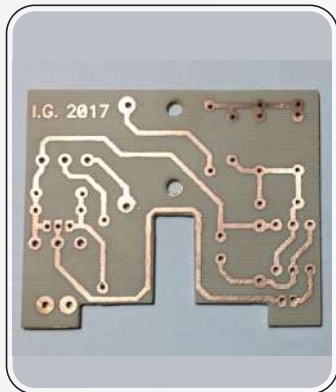
# PRODUCT SAMPLES



PAPER



FABRICS



PCB



ANODIZED ALUMINUM



METAL





LEATHER

**MODEL: S400****SPECIFICATION**

		CO <sub>2</sub>	FIBER	DUAL
Work Area		1016 x 610 mm (40 x 24 in.)		
Work Area	All Doors Closed	1053 x 647 x 280 mm (41.4 x 25.4 x 11 in.)		
	All Doors Open	1053 x ∞ x 280 mm (41.4 x ∞ x 11 in.)		
Table Size		Standard Grid Cutting Table 1019 x 613 mm (40.1 x 24.1 in.)		
Dimensions (L x W x H)		1440 x 900 x 1048mm (56.7 x 35.5 x 41.3 in.)		
Weight	CO2 30~40W	260 kg / 573 lb		
	CO2 60~120W	270 kg/ 595 lb		
	Fiber 20W~60W	260 kg / 573 lb		
Laser Source	10.6-μm CO <sub>2</sub> laser	9.3-μm CO <sub>2</sub> laser	Fiber laser	10.6-μm CO <sub>2</sub> : 30-100W 9.3-μm CO <sub>2</sub> laser: 60W
	40~120W	60W	20 / 30 / 60W	Fiber laser:20/30/60W
Cooling	Air-cooled, Operating environment temperature 15°- 30°C (59°- 86°F)			
Drive	Closed-loop DC servo control			
Maximum Motor Speed	140 IPS			
Speed Control	Adjustable from 0.1~100% (Up to 16 color-linked speed settings per job)			
Power Control	Adjustable from 0~100% (Up to 16 color-linked power settings per job)			
Engraving Capability	256-level gray scale image processing capability			
Distance Accuracy	0.254 mm or 0.1% of move, whichever is greater			
Z-Axis Movement	Automatic			
Focus Lens	CO <sub>2</sub> : Standard 2.0" (Optional 1.5", 2.5" & 4.0")			
	Fiber: Standard 2.0" (Optional 4.0")			
	Dual (CO <sub>2</sub> +Fiber): Standard 2.0" (Optional 3.0" &4.0")			

# SPECIFICATION

Resolution (DPI)	Available 125, 250, 300, 380, 500, 600, 760, 1000, 1500
	10 Base-T Ethernet
	USB Type-A 2.0  - For USB storage
	(Max. 32GB capacity, FAT file system)
	USB Type-B 2.0 - 
	For connecting with the computer
Operating Systems	MS Windows 64 Bit
Control Panel	Touch Screen
Safety	Class I Laser Product Complies with EN60825-1:2014, EN ISO 13849-1:2015
	Class II Laser Product Complies with CDRH for CO2 Laser
	Class 3R Laser Product Compliant with CDRH for Fiber & Dual Laser Source
	2006/42/EC Machinery Directive Compliance
	Class 4 Laser Product Compliant with CDRH with the optional pass-through
	door module
Operation Voltage	Below 80Watt, 100-240VAC, 50/60HZ Auto Switching, max. 15A
	80Watt and above, 200-240VAC, 50/60HZ Auto Switching, max. 15A
Fume Extraction System	External exhaust system with minimum flow rate 800m <sup>3</sup> /h
	(CFM 471 ft <sup>3</sup> /min) is required, 2.3kPA negative pressure
	(Pure-Air PA-1500FS @ 4" exhaust port)



1. Payment to be made in QR currency.
2. Payment Terms: As mentioned in Quotation.
3. Bank Details: -Bank Name: Qatar Islamic Bank  
Branch: Al Khour Branch  
Beneficiary Name: Digital Star Qatar  
Acc #: (0111453200015)  
Swift Code: (QISB - QAQA)  
IBAN: QA16QISB000000000111453200015.
4. Bank Charges: Any bank charges relevant to the above transactions will be to your account.
5. Any charges, duties, taxes or levies at the ports of entry will be to our account.
6. The charges of lodging, boarding and local conveyance of the technician will be to our account.
7. Any required electrical, mechanical & civil site preparation should be done by the customer according to our engineer's requirements.
8. Digital Star Qatar will not be held responsible for delays caused by any damage in the equipment due to shipment, unloading accidents and any related reasons, which is beyond our control.
9. Warranty will be of 12 months from date of installation from Digital Star Qatar. Wear & tear, consumables are exempted and warranty can be claimed only if you use the services from Digital Star Qatar.
10. Service will be free of cost within 12 months from the date of installation.

# TERMS & CONDITIONS

11. Any claim will be invoice directly to you then we will send for claiming procedure which will take 45-60 days, if the claim got approved credit note will issued directly.
12. Quotation will be valid for 7 days from here on.
13. Delivery: As mentioned in quotation



## DIGITAL STAR QATAR ديجيتال ستار قطر

DOHA | QATAR | P O BOX: 47663

 +974 448 34 486

 [info@digitalstarq.com](mailto:info@digitalstarq.com)

 +974 441 63 788

 [www.digitalstarq.com](http://www.digitalstarq.com)