

GCC *LaserPro* **Spirit GLS Hybrid**



www.digitalstarq.com

**The EPITOME OF
EXCELLENCE &
FLEXIBILITY**

Source of Digital Solutions...

Digital Star Qatar has been leading the digital scene in Doha for over 10 years, as suppliers and distributors of signage, advertising and LED solutions. Our commitment to providing the best quality machinery and top-notch technology from around the world has enabled us to set new and improved standards in sign and digital printing industries. DSQ has developed into a true trendsetter and a reliable destination for customers seeking exhaustive custom and wholesale solutions. From sign makers, digital print houses, POS/POP makers, retail fit-out companies, to exhibition stand builders, construction companies and glass and aluminum fabricators industries, we promise to take your business to unprecedented levels

CONTENTS



P3-5 PRODUCT OVERVIEW



P6 OPTIONAL ITEMS



P7-9 PRODUCT SPECIFICATION



P10-11 TERMS AND CONDITIONS



The GCC LaserPro Spirit GLS Hybrid is the flagship model of the award winning GCC LaserPro Spirit line of laser engravers. The Spirit series has received worldwide accolades from the signs and awards industry since its introduction. The Spirit GLS is equipped with sensible upgrades to further boost overall usability

- 38" x 24" (960mm x 610 mm) extra large working area
- CO₂ and Fiber dual lasers Hybridized is one laser system
- QSM (Quality Speed Mode) maintains 100% engraving quality while operating at maximum speed
- Patentes SmartACT™ motion control technology increase your productivity by reducing ramping process and job running time
- Drag N Play feature assures remarkably easy and fast set-ups
- High-Speed DC motor for precise and rapid movement of the laser carriage
- Reliable DuraGuide motion system with reinforced kelvar belt delivers superb output quality
- LED light modules illuminate the working area

RoHS COMPLIANCE



All GCC products are RoHS-compliant (the European Parliament Directive 2002/ 95/ EC, Restriction of Hazardous Substances) and lead-free (pb free). GCC will continue to concern and provide environmentally friendly products to protect the earth for our further generation.



DURAGUIDE MOTION DESIGN

Systematic and reliable motion system embedded with strong mechanical framework and accurate servomotor control technology to deliver superb output quality under rapid movement.



CO₂ & FIBER HYBRID LASERS

GCC Hybrid technology allows to install CO₂ & Fiber dual lasers in one system to expand your business from organic materials processing to direct metal engraving.



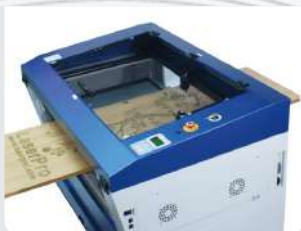
SMARTACT™ (PATENTED)

Ground breaking technology that reduces the ramping process and job running time to boost productivity.



REAR POINTER ALIGNMENT FEATURE

Extra beam combiner to align red pointer with laser beam, What you see is What you get.



PASS-THROUGH FRONT & REAR DOORS (OPTIONAL)

Convenient front and rear door open design enables loading of extremely long working pieces with ease and extends business flexibility.



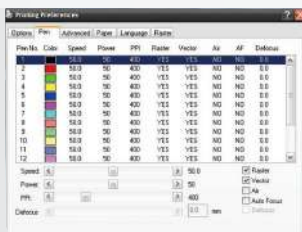
SMARTPIN™ AUTOFOCUS (PATENTED)

The plug and play probe design makes focusing a one-touch process and provides the accuracy and precision required for optimum quality in the lasering process.



KEY SWITCH & EMERGENCY STOP

Key switch safeguards the machine from unauthorized use. Prominent emergency button located on the top of the machine allows operators to stop the laser and the motion carriage immediately provide a safe operating environment.



INNOVATIVE SOFTWARE FEATURES

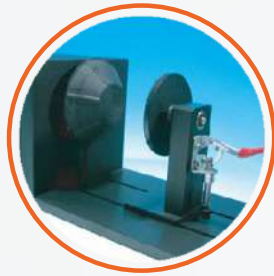
Unbeatable print driver features such as SmartCENTER, Defocus by pen, allow users to reduce set up time and make easy adjustment to achieve marvelous output quality.



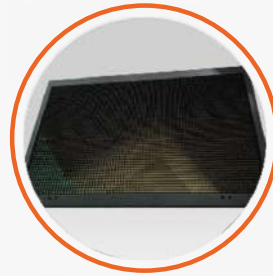
OPTIONAL ITEMS



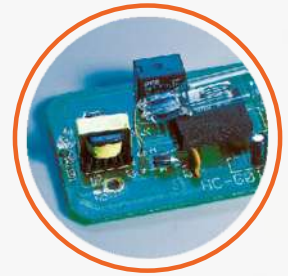
Pass-through Door
Switch Module



Rotary Attachment



Grid Cutting Table/
Honeycomb Table



SmartGUARD™ Fire
Alarm (Patented)



External Control
Interface Board



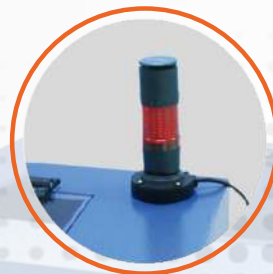
Multi-purpose
Integrated SmartBox™



Air Compressor Unit



Fume Extraction
System





External Signal
Indicator

MODEL: GCC LASER PRO SPIRIT GLS HYBRID

CATEGORY		HYBRID CO ₂ HYBRID FIBER HYBRID DUAL	
Work Area		34 x 24 in. (860 x 610 mm) Extendable to 38 x 24 in. (960 x 610 mm)	
Max. Part Size (L x W x H)		39 x 25 x 7 in. (990 x 635 x 177 mm) 39 x ∞ x 7 in. (990 x ∞ x 177 mm)	
Table Size		40.3 x 27.7 in. (1025 x 705 mm)	
Dimensions		53.7 x 34.6 x 39.7 in. (1365 x 880 x 1010 mm)	
Laser Source	Hybrid CO ₂	10.6μm CO ₂ Laser	30~100w
	Hybrid Fiber	Fiber Laser	20/ 30/ 60 W
	Hybrid Dual	10.6μm CO ₂ Laser:30-100w	Fibe Laser:20/ 30/ 60 W
Cooling		Air-cooled, Operating environment temperature 15°-30°C (60°-86°F)	
Drive		Closed-loop DC Servo Control	
Maximum		Motor Speed 80 IPS	
Speed Control		Adjustable from 0.1~100% (Up to 16 color-linked speed settings per job)	
Power Control		Adjustable from 0~100% (Up to 16 color-linked power settings per job)	

SPECIFICATION

Engraving capability	256-level gray scale image processing capability
Distance Accuracy Z-Axis Movement	0.254 mm or 0.1% of move, whichever is greater Automatic
Focus Lens	Standard 2.0", optional 3.0" & 4.0"
Resolution (DPI)	Available 125, 250, 300, 380, 500, 600, 760, 1000, 1500
Interface	<ul style="list-style-type: none"> • 10 Base-T Ethernet • USB Type-A 2.0  For USB storage (Max. 32GB capacity, FAT file system) • USB Type-B 2.0  connecting with the computer
Operating Systems	MS Windows
Display Panel	4-line LCD display showing current file name, total working time, laser power, engraving speed, File(s) loaded into memory buffer, setup and diagnostic menus
Safety	<ul style="list-style-type: none"> • Class I Laser Product Compliant with EN60825 • Class 3R Laser Product Compliant with CDRH • 2006/42/EC Machinery Directive Compliance • Class 4 Laser Product Compliant with CDRH with the optional pass-through door module

SPECIFICATION

Operation Voltage	<ul style="list-style-type: none">• Below 80Watt, 100-240VAC, 50-60Hz Auto Switching, Max. 15A• 80Watt and above, 200-240VAC, 50-60Hz, Switching Max. 15A
Fume Exhaust System	External exhaust system with minimum flow rate 800m³/h (CFM 471 ft³/h) is required 2.3kPA negative pressure (Pure-Air PA-1500FS @ 4" exhaust port)



TERMS & CONDITIONS

1. Payment to be made in QR currency.
2. Payment Terms: As mentioned in Quotation.
3. Bank Details: -Bank Name: Qatar Islamic Bank
Branch: Al Khour Branch
Beneficiary Name: Digital Star Qatar
Acc #: (0111453200015)
Swift Code: (QISB – QAQA)
IBAN: QA16QISB000000000111453200015.
4. Bank Charges: Any bank charges relevant to the above transactions will be to your account.
5. Any charges, duties, taxes or levies at the ports of entry will be to our account.
6. The charges of lodging, boarding and local conveyance of the technician will be to our account.
7. Any required electrical, mechanical & civil site preparation should be done by the customer according to our engineer's requirements.
8. Digital Star Qatar will not be held responsible for delays caused by any damage in the equipment due to shipment, unloading accidents and any related reasons, which is beyond our control.
9. Warranty will be of 12 months from date of installation from Digital Star Qatar. Wear & tear, consumables are exempted and warranty can be claimed only if you use the services from Digital Star Qatar.
10. Service will be free of cost within 12 months from the date of installation.

TERMS & CONDITIONS

11. Any claim will be invoice directly to you then we will send for claiming procedure which will take 45-60 days, if the claim got approved credit note will issued directly.
12. Quotation will be valid for 7 days from here on.
13. Delivery: As mentioned in quotation



DIGITAL STAR QATAR

دجیتال ستار قطر

DOHA | QATAR | P O BOX: 47663

+974 446 02 558 +974 441 63 788 info@digitalstarq.com www.digitalstarq.com

