

# **GCC** *LaserPro* **Spirit GLS**



[www.digitalstarq.com](http://www.digitalstarq.com)

## The Most Advanced Laser Engraver

# Source of Digital Solutions...

Digital Star Qatar has been leading the digital scene in Doha for over 10 years, as suppliers and distributors of signage, advertising and LED solutions. Our commitment to providing the best quality machinery and top-notch technology from around the world has enabled us to set new and improved standards in sign and digital printing industries. DSQ has developed into a true trendsetter and a reliable destination for customers seeking exhaustive custom and wholesale solutions. From sign makers, digital print houses, POS/POP makers, retail fit-out companies, to exhibition stand builders, construction companies and glass and aluminum fabricators industries, we promise to take your business to unprecedented levels

## CONTENTS

 **P3-5** PRODUCT OVERVIEW

 **P6** OPTIONAL ITEMS

 **P7-8** PRODUCT SPECIFICATION

 **P9-10** TERMS AND CONDITIONS



The GCC LaserPro Spirit GLS is the flagship model of the award winning GCC LaserPro Spirit line of laser engravers. The Spirit series has received worldwide accolades from the signs and awards industry since its introduction. The Spirit GLS is equipped with sensible upgrades to further boost overall usability

- 38" x 24" (960mm x 610 mm) extra large working area
- QSM (Quality Speed Mode) maintains 100% engraving quality while operating at maximum speed
- Patentes SmartACT™ motion control technology increase your productivity by reducing ramping process and job running time
- Drag and engrave feature assures remarkably easy and fast set-ups
- High-Speed DC motor runs upto 80IPS for precise and rapid movement of the laser carriage
- Reliable DuraGuide motion system with reinforced kelvar belt delivers superb output quality
- Pass-Through front and rear doors to accommodate long working pieces

### RoHS COMPLIANCE

All GCC products are RoHS-compliant (the European Parliament Directive 2002/ 95/ EC, Restriction of Hazardous Substances) and lead-free (pb free). GCC will continue to concern and provide environmentally friendly products to protect the earth for our further generation.





### DURAGUIDE MOTION DESIGN

Systematic and reliable motion system embedded with strong mechanical framework and accurate servomoto control technology to deliver superb output quality under rapid movement.



### SMARTLIGHT

Built-in LED light module illuminates the working space and makes every engraving detail easy to see.



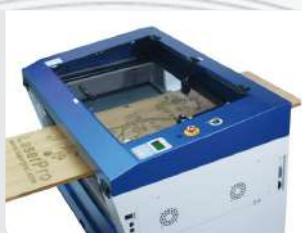
### SMARTACT™ (PATENTED)

Ground breaking technology that reduces the ramping process and job running time to boost productivity.



### EASY TO USE CONTROL PANEL

A control panel with coherent hot-key design and graphical icon displays that allows you to change laser parameter settings, set jobs to repeat unlimited times, queue jobs, delete jobs, and more



### PASS-THROUGH FRONT & REAR DOORS (OPTIONAL)

Convenient front and rear door open design enables loading of extremely long working pieces with ease and extends business flexibility.



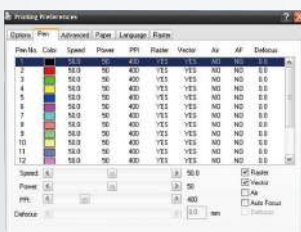
### SMARTPIN™ AUTOFOCUS (PATENTED)

The plug and play probe design makes focusing a one-touch process and provides the accuracy and precision required for optimum quality in the lasering process.



### KEY SWITCH & EMERGENCY STOP

Key switch safeguards the machine from unauthorized use. Prominent emergency button located on the top of the machine allows operators to stop the laser and the motion carriage immediately provide a safe operating environment.



### INNOVATIVE WINDOWS DRIVER

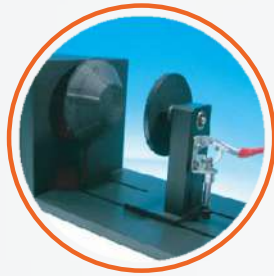
Various user friendly features such as SmartCENTER, Defocus by pen, allow users to reduce set up time and make easy adjustment to achieve marvelous output quality.



OPTIONAL ITEMS



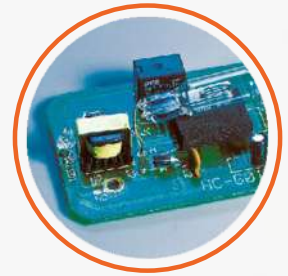
Pass-through Door Switch Module



Rotary Attachment



SmartAIR Nozzle



SmartGUARD™ Fire Alarm (Patented)



External Control Interface Board



SmartPRINT™



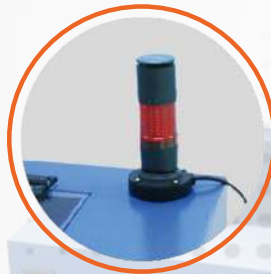
Multi-purpose Integrated SmartBox™



Air Compressor Unit



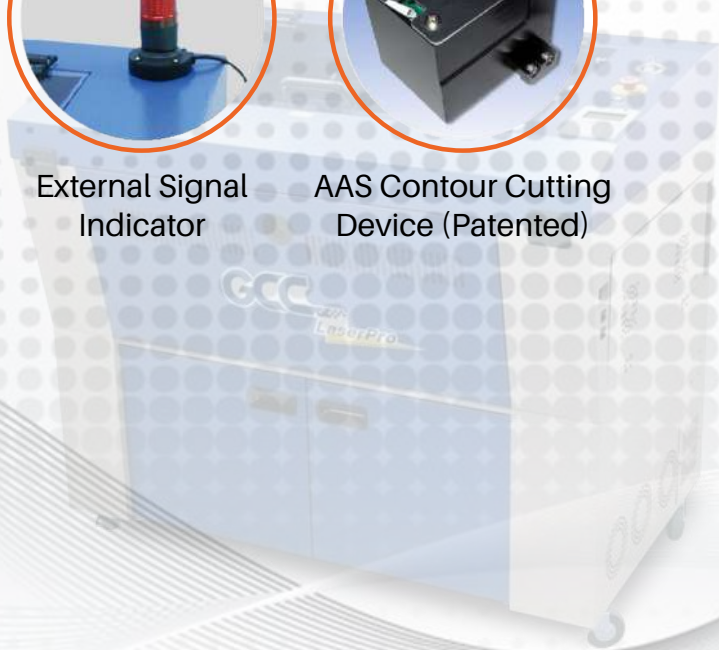
Fume Extraction System



External Signal Indicator



AAS Contour Cutting Device (Patented)





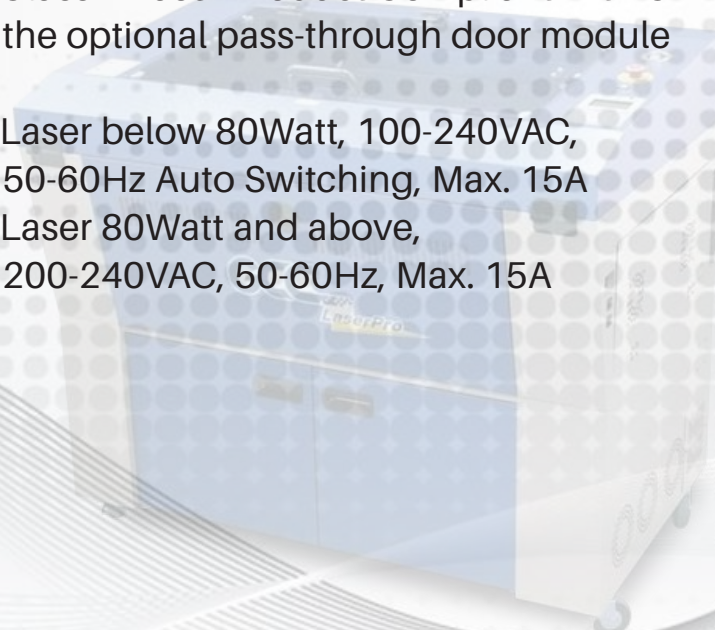
# SPECIFICATION

## MODEL: GCC LASERPRO SPIRIT GLS

Work Area	34 x 24 in. (860 x 610 mm) Extendable to 38 x 24 in. (960 x 610 mm)
Max. Part Size (L x W x H)	39 x 25 x 7 in. (990 x 635 x 177 mm) 39 x ∞ x 7 in. (990 x ∞ x 177 mm)
Table Size	40.3 x 27.7 in. (1025 x 705 mm)
Dimensions	53.7 x 34.6 x 39.7 in. (1365 x 880 x 1010 mm)
Laser Source	30 to 100W 10.6-μm sealed CO2 Laser / 20W & 60W 9.3-μm sealed CO2 Laser
Cooling	Air-cooled, Operating environment temperature 15°-30°C (60°-86°F)
Drive	Closed-loop DC Servo Control
Maximum	Motor Speed 80 IPS
Speed Control	Adjustable from 0.1~100% (Up to 16 color-linked speed settings per job)
Power Control	Adjustable from 0~100% (Up to 16 color-linked power settings per job)
Engraving capability	256-level gray scale image processing capability
Distance Accuracy	0.254 mm or 0.1% of move, whichever is greater
Z-Axis Movement	Automatic

# SPECIFICATION

Focus Lens	Standard 2.0", optional 1.5", 2.5", & 4.0" available
Resolution (DPI)	Available 125, 250, 300, 380, 500,600, 760, 1000, 1500
Interface	<ul style="list-style-type: none"><li>•10 Base-T Ethernet</li><li>•USB Type-A 2.0  For USB storage (Max. 32GB capacity, FAT file system)</li><li>•USB Type-B 2.0  connecting with the computer</li></ul>
Operating Systems	MS Windows
Display Panel	4-line LCD display showing current file name, total working time, laser power, engraving speed, File(s) loaded into memory buffer, setup and diagnostic menus
Safety	<ul style="list-style-type: none"><li>•Class I Laser Product Compliant with EN60825</li><li>•Class II Laser Product Compliant with CDRH</li><li>•2006/42/EC Machinery Directive Compliance</li><li>•Class 4 Laser Product Compliant with CDRH with the optional pass-through door module</li></ul>
Operation Voltage	<ul style="list-style-type: none"><li>•Laser below 80Watt, 100-240VAC, 50-60Hz Auto Switching, Max. 15A</li><li>•Laser 80Watt and above, 200-240VAC, 50-60Hz, Max. 15A</li></ul>

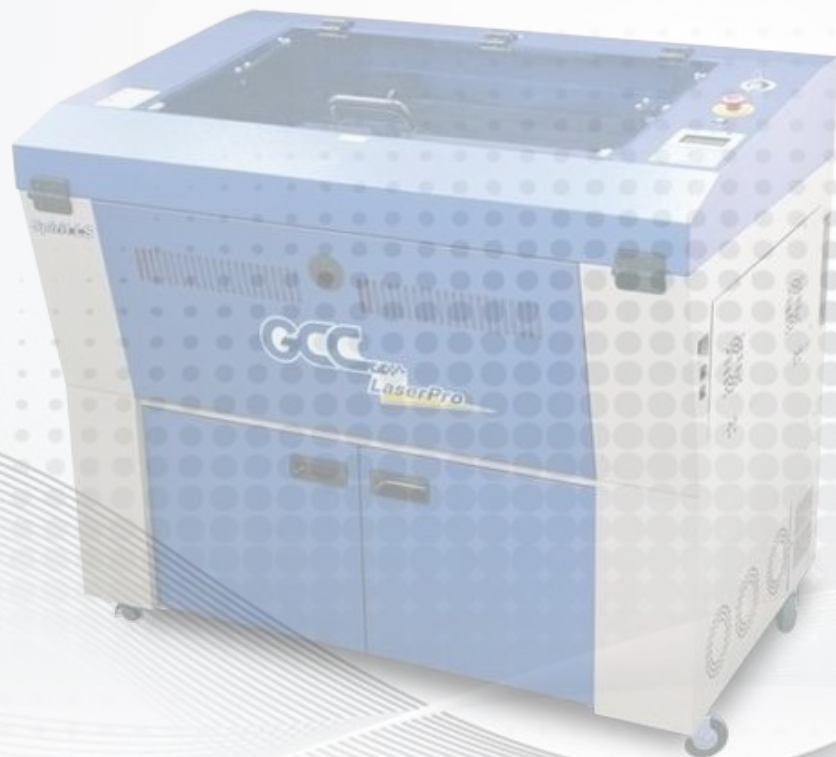




1. Payment to be made in QR currency.
2. Payment Terms: As mentioned in Quotation.
3. Bank Details: -Bank Name: Qatar Islamic Bank  
Branch: Al Khour Branch  
Beneficiary Name: Digital Star Qatar  
Acc #: (0111453200015)  
Swift Code: (QISB - QAQA)  
IBAN: QA16QISB000000000111453200015.
4. Bank Charges: Any bank charges relevant to the above transactions will be to your account.
5. Any charges, duties, taxes or levies at the ports of entry will be to our account.
6. The charges of lodging, boarding and local conveyance of the technician will be to our account.
7. Any required electrical, mechanical & civil site preparation should be done by the customer according to our engineer's requirements.
8. Digital Star Qatar will not be held responsible for delays caused by any damage in the equipment due to shipment, unloading accidents and any related reasons, which is beyond our control.
9. Warranty will be of 12 months from date of installation from Digital Star Qatar. Wear & tear, consumables are exempted and warranty can be claimed only if you use the services from Digital Star Qatar.
10. Service will be free of cost within 12 months from the date of installation.

# TERMS & CONDITIONS

11. Any claim will be invoice directly to you then we will send for claiming procedure which will take 45-60 days, if the claim got approved credit note will issued directly.
12. Quotation will be valid for 7 days from here on.
13. Delivery: As mentioned in quotation



# DIGITAL STAR QATAR

## دجیتال ستار قطر

DOHA | QATAR | P O BOX: 47663

 +974 446 02 558  +974 441 63 788  info@digitalstarq.com  www.digitalstarq.com

