

Mimaki
AUTHORISED PARTNER

SWJ-320EA

Designed for quality at the best price

3.2M Grand Format Inkjet Printer

EMPOWERED HIGH
PRODUCTIVITY



Print
and Cut

Width:3.2m

DIGITAL STAR QATAR
ديجيتال ستار قطر

SOURCE OF DIGITAL SOLUTIONS

Digital Star Qatar has been leading the digital solution in Doha, for more than 10 years as a supplier and distributors for the digital sector. Our commitment to providing the best quality machinery with advanced technology, which can help your business to expand more with successful outcomes.

The world has enabled us the opportunity to set ultra-standards in signages and digital printing industries. DSQ has developed into a true trendsetter and a reliable destination for customers seeking wholesale solutions. We help the sectors like sign makers, digital print houses, POS/POP makers, fit-out companies, event managements, and glass & aluminium fabrication industries. we promise to take your business to stand head.



***Best A Grade Quality &
Innovative Products***



SWJ-320EA

The best wide-format printer to win a competitive market

A successor to the legendary SWJ-320S4, the Mimaki SWJ-320EA solvent printer is a revolutionary 3.2 metre-wide solvent printer complete with new generation high-speed print heads arranged in stagger mode, making it possible to print large format images for almost any exterior or interior purpose. Its functionality is further expanded by Mimaki Core Technologies, including MAPS4 and NRS, offering a unique ratio of affordable price, high quality and reliability.

- Maximum speed of 137sqm/h (300x600dpi) for distance viewing and 35sqm/h (600x600dpi) for short range viewing.
- Print super wide format up to 3.2m or Twin-Roll function up to 1524mm printed simultaneously.
- High Image Quality by Mimaki's unique MAPS4 technology at 1200dpi maximum resolution
- Uninterrupted printing solutions with NRS functionality.
- High Image Quality by Mimaki's unique MAPS4 technology at 1200dpi maximum resolution.
- Reduced running costs with Mimaki CS100 solvent-based ink.
- Intuitive and high functional operation by RasterLink6.

CREATE...

Indoor and outdoor signage, exhibition and display graphics, transport, floor and window graphics, retail PoS and much more...

SUBSTRATES

PVC film, banner material, tarpaulin backlit, photo paper, billboard paper, blue-back, backlit film and most media currently used in solvent machines.



Mimaki's Unique Core Technologies

ENSURE CONTINUOUS PRINTING OPERATION, COMBINED WITH SUPERIOR IMAGE QUALITY

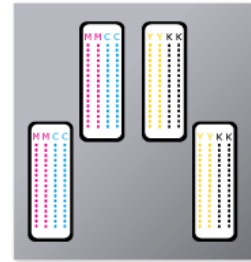


FOUR ADVANCED PRINTHEADS WITH TOP SPEEDS UP TO 137SQM/H !

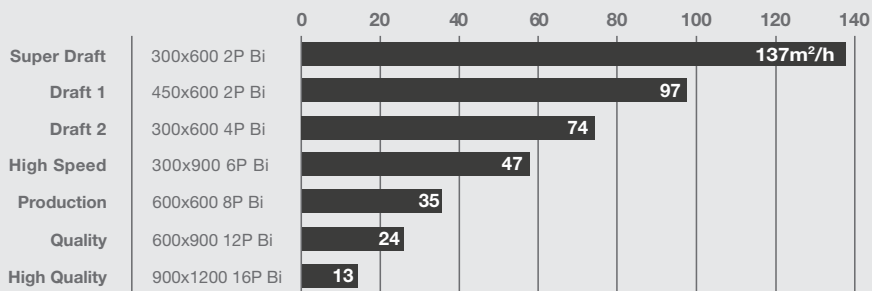
New generation of high-speed print heads arranged in stagger mode with a resolution up to 1200 dpi allows the high speed production at the speed of max. 137sqm/h.

HEAD CONFIGURATION

4 printheads with 2 staggered configuration



PRINT SPEED



FOR STABLE PRODUCTION AND SUPERIOR IMAGE QUALITY



NRS
Nozzle Recovery System
substitutes defective nozzles, offering uninterrupted printing.



MAPS4
Mimaki Advanced Pass System reduces banding by dispersing ink drops between passes.



VARIABLE DOT
enables the printer to print in 3 different dot sizes to create high quality images with smooth gradations.



INTELLIGENT HEATERS
3-way intelligent heaters improve media and ink performance. Pre- and print-heaters optimise ink adhesion. Post-heaters accelerate drying.

UNMATCHABLE RUNNING COSTS

AFFORDABLE SOLVENT INK "CS100"

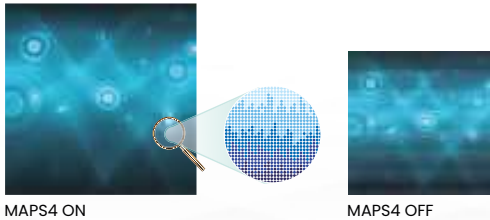
Not only is our CS100 ink (available in 2L bottles) more affordable than conventional ink cartridges, it also has exceptional stability and low propensity to clog nozzles.

The CS100 ink also brings the same Mimaki standards for colour accuracy, image durability and weatherability found in other conventional Mimaki solvent inks. In combination with the low investment cost of the SWJ-320EA, our competitive ink price will provide you the lowest sqm cost in the market!



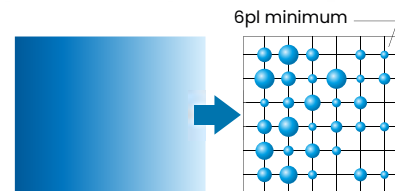
MIMAKI CORE TECHNOLOGIES AT A COMPETITIVE PRICE

Mimaki Advanced Pass System (MAPS4)
Mimaki Advanced Pass System (MAPS) utilises an advanced algorithm pattern to reduce banding and uneven colour, ensuring high print quality even at higher speeds.



Variable Dot

Mimaki's world proven technology produces unbeatable high definition and resolution prints. With three different dot sizes (6pl, 15pl, 21pl) and a maximum resolution of 900x1200dpi, the SWJ-320EA ensures fantastic print results without a grainy appearance.



OPTIONAL AIR PURIFIER UNIT

DESIGNED EXCLUSIVELY BY BOFA FOR THE MIMAKI SWJ-320EA

The BOFA Air Purifier Unit is a dual fume extraction system manifold that can effectively capture and remove VOCs (Volatile Organic Compounds), ensuring a cleaner and more pleasant working environment.

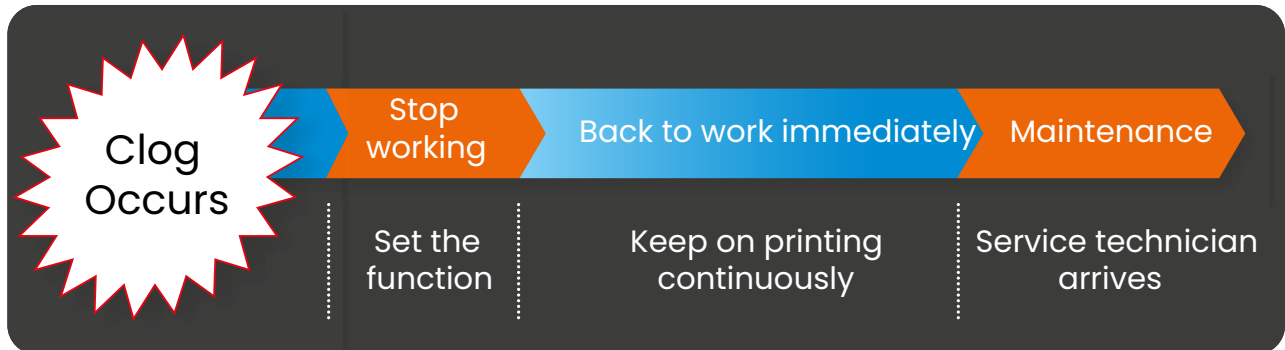
Featuring a clean and seamless design, this option is affixed directly to the front of the printer, filtering the fumes through a dual stage filtration process and returning the clean air back to the working environment.

The BOFA Air Purifier Unit reduces any unpleasant odour to an absolute minimum and features user replaceable HEPA/gas filters. Installing the unit can also be done easily by the operator.



NOZZLE RECOVERY SYSTEM (NRS)

In the unlikely event of a nozzle dropping out during a long print run, the NRS can be activated by the operator to allow the printer to continue printing in excellent quality until maintenance is performed.



* 1. Nozzle Recovery Function does not work in Super Draft Mode.

HIGH PRODUCTIVITY

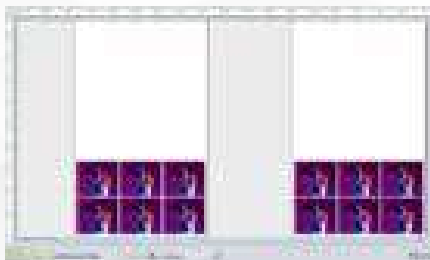
Twin-roll printing* doubles productivity and shortens delivery time of small width print jobs. Two media rolls can be used for simultaneous printing of two independent print jobs. The print width for each roll can be set separately and handling different jobs at the same time is easy with the bundled RIP software:

RasterLink6Plus



*The option "Small take-up unit (OPT-J0394)" is required to enable twin-roll printing.

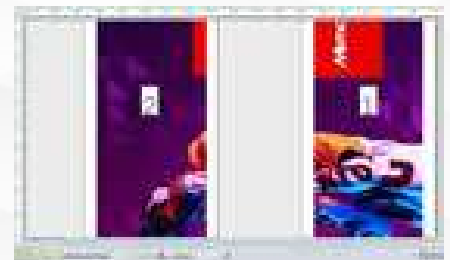
COPY



IMPOSITION



TILING



Newly upgraded RIP software with higher functionality and more user-friendliness

RASTER LINK 6 PLUS

Simple icon display - Intuitive and easy-to-understand operability
Save operation time by registering settings as favorites

Product Samples



Backlit



Banners and Posters



Billboards



Window Decoration

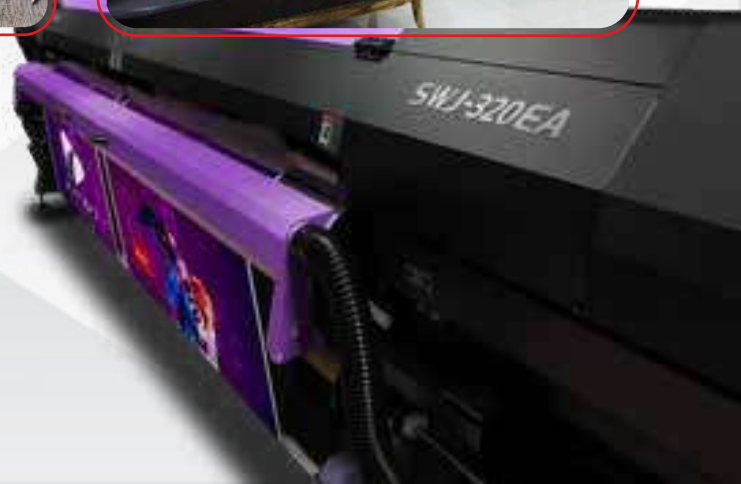


Stickers



Wallpaper

Product
Samples



Specification

Print Head	On-demand Piezo head (4 printheads with 2 staggered configuration)	
Print Resolution	300dpi, 450dpi, 600dpi, 900dpi, 1,200dpi	
Maximum Print Width	3,200mm	
Ink	Type	CS100 solvent ink (C, M, Y, K) in 2L bottles
	Ink supply system	3L / each colour
Media	Width	Min. 210mm - Max. 3,250mm
		Twin roll setting: 1,524mm per roll
		Roll holder setting: 1,620mm
	Weight	Feeding: up to 100kg, Take-up: up to 100kg
When using roll holders: up to 25kg		
Drying device	3-way intelligent heater (pre/print/post)	
Safety standard	VCCI Class A / FCC-class A / ETL UL 60950-1 / CE Marking (EMC, Low voltage, Machinery Directive, RoHS) / CB Report / REACH / EAC	
Interface	Ethernet 1000BASE-T (Recommended) / USB2.0	
Power	AC200 - 240V, 50/60 Hz, 29A or less	
Power consumption	6.9kW or less	
Operational environment	Temperature	20 - 30°C
	Humidity	35 - 65%Rh (Non-condensing)
Dimensions (W×D×H)	5,410 x 995 x 1,440mm	
Weight	850kg	
Included	RIP (RasterLink6Plus), Media feeding / take-up device	

*Specifications are subject to change without prior notice, all rights reserved

Supplies & Options

Item	Item code
Solvent ink CS100 (2L ink bottle)	CS100-x-BB-1
Small take-up unit (for twin-roll printing)	OPT-J0394
Take-up roll holder unit	OPT-J0409
3.2m roll shaft unit	OPT-J0410
BOFA™ Air Purifier Unit	K-SWJ320EA-BOFA

SYSTEM REQUIREMENTS (PC's)

Operating System*	Windows 10 (64 Bit) or Later
Processor	i7 - 2.6 GHz or faster
Memory (RAM)	Min. 8GB or More
Video Card and Monitor(VGA)	1280x1024 or Higher Resolution is Recommended
Working Hard Disk Space	1 TB SSD or more recommended
Graphics Card	2GB or more (Optional)
Optical drive	DVD-ROM
Other requirements	Ethernet connection for network capable printers
	Available USB ports and PCIE Slot
Recommended Brand	Lenovo / Dell

* Note: You can use a laptop or desktop computer

* Use the original operating system and software. If you are using pirated operating system or software, we are not responsible for any damage to Machine workings, and also the warranty terms will become void.

POWER REQUIREMENTS

Voltage Regulator	5000W Stabilizer
-------------------	------------------

SWJ-320EA

3.2M Grand Format Inkjet Printer



Terms and Conditions

1. Payment to be made in QR currency.
2. Payment Terms: As mentioned in Quotation.
3. Bank Details:

Bank Name	Branch	Beneficiary Name	Acc #	Swift Code
Qatar Islamic Bank	Al Khour Branch	Digital Star Qatar	0111453200015	QISB - QAQA
IBAN: QA16QISB000000000111453200015				

4. Bank Charges: Any bank charges relevant to the above transactions will be to your account.
5. Any charges, duties, taxes or levies at the ports of entry will be to our account.
6. The charges of lodging, boarding and local conveyance of the technician will be to our account.
7. Any required electrical, mechanical and civil site preparation should be done by the customer according to our engineer's requirements.
8. Digital Star Qatar will not be held responsible for delays caused by any damage in the equipment due to shipment, unloading accidents and any related reasons, which is beyond our control.
9. The warranty will be 12 months from the date of installation from Digital Star Qatar. Wear and tear, consumables are exempted and warranty can be claimed only if you use the Inks and Services from Digital Star Qatar.
10. Service will be free of cost within 12 months from the date of installation.
11. Any claim will be invoice directly to you then we will send for claiming procedure which will take 45-60 days, if the claim got approved credit note will issued directly.
12. Delivery: As mentioned in quotation

DIGITAL STAR QATAR
ديجيتال ستار قطر

DOHA | QATAR | P O BOX: 47663



+974 448 34 486



info@digitalstarq.com



+974 441 63 788



www.digitalstarq.com