

MATRIX LAM

FLATBED WORKSTATION

FOR ALL SIZE PRINTS & BOARDS



MXLM - SERIES

Source of Digital Solutions...

Welcome to Digital Star, your trusted partner in the world of cutting-edge printing solutions. As a leading printing machines, materials, and ink authorized dealer in Doha - The State of Qatar, we pride ourselves on delivering state-of-the-art technology that empowers to achieve unparalleled levels of efficiency and quality. At Digital Star, we understand the pivotal role that printing machinery plays in the success of your operations. With a commitment to innovation and excellence, we curate a diverse range of top-tier printing machines to meet the unique needs of our clients. Our product line-up reflects the latest advancements in the industry.

As a responsible printing machines supplier, we prioritize sustainability. Our commitment to eco-friendly practices is reflected in the products we offer, promoting energy efficiency and environmentally conscious manufacturing processes.

When you choose Digital Star, you're not just investing in cutting-edge technology - you're partnering with a company that values the planet as much as your success.

PRODUCT OVERVIEW

FOR ALL SIZE PRINTS & BOARDS Fit to: KT plate/glass/wood and other flat sheets to laminate film on it.

This flatbed applicator applies to both the furniture industry and advertising industry.

MANY APPLICATIONS WITH ONE MACHINE



Whether you're pre-masking cut letters, mounting prints onto boards or laminating, the MATRIX flatbed applicator will help you do the job without wrinkles or bubbles resulting in a smooth finish everytime.

Even over size prints can be finished with ease.

What's more, it can be run with one operator making your shop more efficient!

Let Your Work Table Work for You.

ADVANTAGES

- Reduce production time dramatically
- Consistent high quality work flow
- Time saving equals more profit
- Ergonomically designed, easy to use
- Only minimal training required to operate requires only one person to operate



FEATURES

- LED table illumination
- Heat assisted roller
- Desgarpén table edge with scale meter
- Heavy duty Steel frame
- Tension Media feed shafts
- Side trays with removable media holders

SLIM BUT STRONG MACHINE BODY

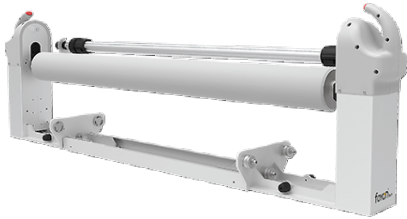
Pure Alloy Aluminum Profile structure
10mm thickness Tempered Glass
All corners and edges are rounded

Laboratory level flat surface
Anti-scratching and withstand impact

BENEFITS

- Extra-large 6000*2000 flatbed table
- Perfectly flat applicator to any substrate with no bubbles
- Can be run by one operator
- Ergonomic working position
- Free access to roller, media and table top
- Protected activation button
- Backlit cutting table improves accuracy and control
- Can accommodate media up to 100mm thick





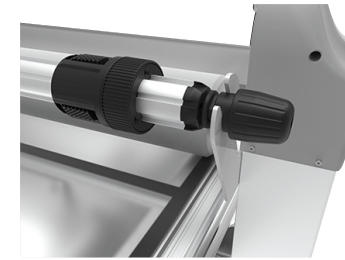
FREE GANTRY DESIGN

Ensure there is nothing but the roller on the table. Users do not need to pass the printing materials under the gantry, greatly simplify user's operations.



EXCLUSIVE DESIGN OF SIDE-POCKET HOLDERS

Invention Patent protection Allowed the roll materials rolling in the side pocket. Avoid any damage for the prints. The holders could be removed easily when they are not in use.



EXCLUSIVE DESIGN OF MECHANICAL TENSION

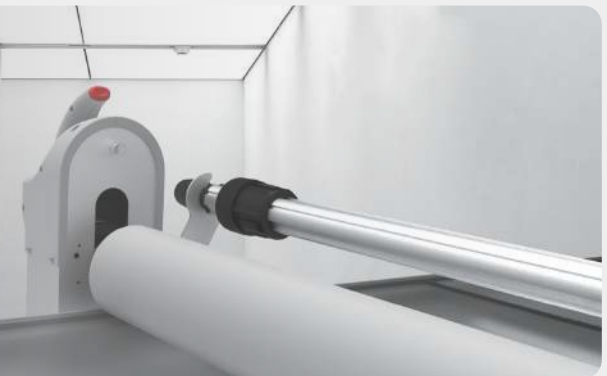
We chose the rectangular spring to get the process of increasing friction more smoothly and continuously, result in a better control of materials tension.

Invention Patent protection
Tight and fix the core by twisting the black ring outer, which can keep the whole locking continuous stable.

ONE BUTTON CONTROL

The table roll lifting is controlled by electromagnetic valve can stands 200,000 times reciprocation.

According to the gripping habits of human palms, it is allowed to operate the Silica roller lifting while moving the gantry.



TECHNICAL SPECIFICATION

Model: FLATBED WORKSTATION

MODEL NO	MXLM-1325	MXLM-1530	MXLM-1737
Max laminating size	1310/2500mm	1510/3000mm	1710/3700mm
Max laminating thickness	100mm		
Operation type	Manual		
Heating	Infrared		
Roller upgrade	Air cylinder		
Preheating	10-15min		
Power input	0.8~1.0kw/h		
Pressure range	0~0.8Mpa		
N.W	820kgs	940kgs	1150kgs

*Specifications are subject to change without prior notice, all rights reserved.

OPTIONAL

- Material holder
- Clear PVC cutting mat for top of table
- Lift table legs optional
- Flexible adjusting in table height, convenient for different operators
Make you could always find a suitable height to deal with different kinds materials and different works.

TERMS AND CONDITIONS

01. Payment to be made in QR currency.
02. Payment Terms : As mentioned in Quotation.
03. Bank Charges: Any bank charges relevant to the above transactions will be to your account.
04. Any charges, duties, taxes or levies at the ports of entry will be to our account.
05. The charges of loading, boarding and local conveyance of the technician will be to our account.
06. Any required electrical, mechanical and civil site preparation should be done by the customer according to our engineer's requirements.
07. Digital Star Qatar will not be held responsible for delays caused by any damage in the equipment due to shipment, unloading accidents & any related reasons, which is beyond our control.
08. Warranty will be 12 months from the date of installation from Digital Star Qatar.
Wear and tear, consumables are exempted and warranty can be claimed only if you use the Inks and Services from Digital Star Qatar.

www.digitalstarq.com

09. Service will be free of cost within 12 months from the date of installation.
10. Any claim will be invoice directly to you then we will send for claiming procedure which will take 45-60 days, if the claim got approved credit note will issued directly.
11. Delivery: As mentioned in quotation

DIGITAL STAR QATAR

ديجيتال ستار قطر

DOHA | QATAR | P O BOX: 47663



+974 448 34 486



+974 441 63 788



info@digitalstarq.com



www.digitalstarq.com