

Laser Engraving Machine

S400 Laser Engraver

Inherit all the advantages from Spirit Hybrid, a brand new machine - S400 features 140ips processing speed by DC servo motor, innovative touch panel, user-friendly interface and a modern good looking design.



GCC

S400
Laser Engraver

Source of Digital Solutions...

Digital Star Qatar has been leading the digital scene in Doha for over 10 years, as suppliers and distributors of signage, advertising and LED solutions. Our commitment to providing the best quality machinery and top-notch technology from around the world has enabled us to set new and improved standards in sign and digital printing industries. DSQ has developed into a true trendsetter and a reliable destination for customers seeking exhaustive custom and wholesale solutions. From sign makers, digital print houses, POS/POP makers, retail fit-out companies, to exhibition stand builders, construction companies and glass and aluminum fabricators industries, we promise to take your business to unprecedented levels



P3-6 PRODUCT OVERVIEW



P7-9 PRODUCT SPECIFICATION



P10-11 TERMS AND CONDITIONS



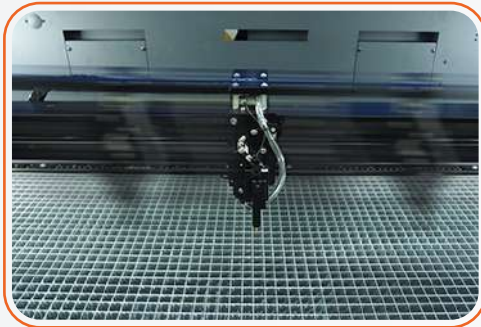
CONTENTS

Laser Engraving Machine

S400 Laser Engraver



Together with SmartFLOW™ dust prevention technology and SmartLID™ easy access invention, S400 presents you the highest throughput and precise laser engraving and cutting quality. GCC S400 makes all your imaginations to life at the speed of light.



Perfect Cutting & Engraving Throughput

Maximum 140ips processing speed with powerful DC servo motor to boost productivity while maintaining precision.



Pass-through Front to Rear Doors (Optional)

A design with doors on both ends to accommodate extremely long working pieces, front door without the need for a screwdriver.



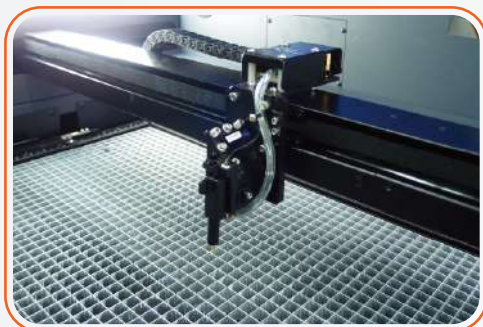
SmartLID™ Easy Access

Easy access design simplifies the maintenance job.



SmartFLOW™ Technology

SmartFLOW™ invention creates a perfect Air Flow to enhance the vacuum effect & bring out the dust completely while working.



SmartACT™ (Patented)

Ground-breaking technology that reduce the ramping process, the job running time, which translates into higher productivity.



SmartLIGHT

Built-in LED light module illuminates the working space & makes every engraving detail easy to see.



SmartSEAL™ Technology

New gantry design to prevent dust, the easy take-off cover also makes the maintenance a lot easier.



Intuitive Touch Screen

Operation is easy and intuitive with the 4" touchscreen.



User friendly driver interface

Starting from end users' view, GCC driver evolve into a brand new design with the intuitive interface to favor each user.



Stamp Mode With Shoulder Level Function

E200 stamp mode with shoulder level function enables you to produce a professional stamp easily.

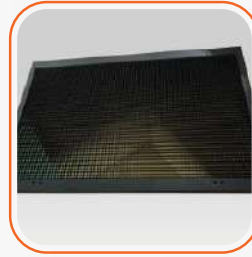
OPTIONAL ITEMS



Pass-Through
Door Switch
Module



Smart Vision™
Pro CCD



Multiple Table
Choices



Air Compressor
Unit



Rotary
Attachment /
Rotary Chuck



Fume Extraction
System



External Signal
Indicator



SmartGUARD™
Fire Alarm (Patented)

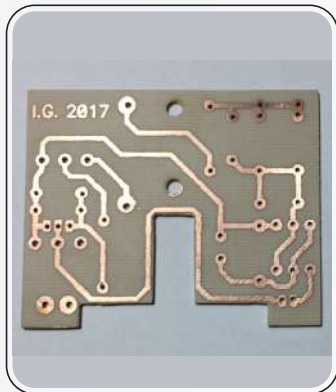
PRODUCT SAMPLES



PAPER



FABRICS



PCB



ANODIZED ALUMINUM



METAL





LEATHER

MODEL: S400**SPECIFICATION**

| | | CO ₂ | FIBER | DUAL |
|------------------------|---|---|---------------|--|
| Work Area | | 1016 x 610 mm (40 x 24 in.) | | |
| Work Area | All Doors Closed | 1053 x 647 x 280 mm (41.4 x 25.4 x 11 in.) | | |
| | All Doors Open | 1053 x ∞ x 280 mm (41.4 x ∞ x 11 in.) | | |
| Table Size | | Standard Grid Cutting Table 1019 x 613 mm (40.1 x 24.1 in.) | | |
| Dimensions (L x W x H) | | 1440 x 900 x 1048mm (56.7 x 35.5 x 41.3 in.) | | |
| Weight | CO2 30~40W | 260 kg / 573 lb | | |
| | CO2 60~120W | 270 kg/ 595 lb | | |
| | Fiber 20W~60W | 260 kg / 573 lb | | |
| Laser Source | 10.6-μm CO ₂ laser | 9.3-μm CO ₂ laser | Fiber laser | 10.6-μm CO ₂ : 30-100W 9.3-μm CO ₂ laser: 60W |
| | 40~120W | 60W | 20 / 30 / 60W | Fiber laser:20/30/60W |
| Cooling | Air-cooled, Operating environment temperature 15°- 30°C (59°- 86°F) | | | |
| Drive | Closed-loop DC servo control | | | |
| Maximum Motor Speed | 140 IPS | | | |
| Speed Control | Adjustable from 0.1~100% (Up to 16 color-linked speed settings per job) | | | |
| Power Control | Adjustable from 0~100% (Up to 16 color-linked power settings per job) | | | |
| Engraving Capability | 256-level gray scale image processing capability | | | |
| Distance Accuracy | 0.254 mm or 0.1% of move, whichever is greater | | | |
| Z-Axis Movement | Automatic | | | |
| Focus Lens | CO ₂ : Standard 2.0" (Optional 1.5", 2.5" & 4.0") | | | |
| | Fiber: Standard 2.0" (Optional 4.0") | | | |
| | Dual (CO ₂ +Fiber): Standard 2.0" (Optional 3.0" &4.0") | | | |

SPECIFICATION

| | |
|------------------------|---|
| Resolution (DPI) | Available 125, 250, 300, 380, 500, 600, 760, 1000, 1500 |
| | 10 Base-T Ethernet |
| | USB Type-A 2.0  - For USB storage |
| | (Max. 32GB capacity, FAT file system) |
| | USB Type-B 2.0 -  |
| | For connecting with the computer |
| Operating Systems | MS Windows 64 Bit |
| Control Panel | Touch Screen |
| Safety | Class I Laser Product Complies with EN60825-1:2014, EN ISO 13849-1:2015 |
| | Class II Laser Product Complies with CDRH for CO2 Laser |
| | Class 3R Laser Product Compliant with CDRH for Fiber & Dual Laser Source |
| | 2006/42/EC Machinery Directive Compliance |
| | Class 4 Laser Product Compliant with CDRH with the optional pass-through |
| | door module |
| Operation Voltage | Below 80Watt, 100-240VAC, 50/60HZ Auto Switching, max. 15A |
| | 80Watt and above, 200-240VAC, 50/60HZ Auto Switching, max. 15A |
| Fume Extraction System | External exhaust system with minimum flow rate 800m ³ /h |
| | (CFM 471 ft ³ /min) is required, 2.3kPA negative pressure |
| | (Pure-Air PA-1500FS @ 4" exhaust port) |

SYSTEM REQUIREMENTS (PC's)

Refer to the appropriate section below for the minimum and recommended computer system requirements necessary to use this printer.

| | |
|-----------------------------|---|
| Operating System* | Windows 10 (64 Bit) or Later |
| Processor | i7 - 2.6 GHz or faster |
| Memory (RAM) | Min. 8GB or More |
| Video Card and Monitor(VGA) | 1280x1024 or Higher Resolution is Recommended |
| Working Hard Disk Space | 1 TB SSD or more recommended |
| Graphics Card | 2GB or more (Optional) |
| Optical drive | DVD-ROM |
| Other requirements | Ethernet connection for network capable printers Available USB ports and PCIE Slot |
| Recommended Brand | Lenovo / Dell |

* Note: You can use a laptop or desktop computer

* Use the original operating system and software. If you are using pirated operating system or software, we are not responsible for any damage to Machine workings, and also the warranty terms will become void.

POWER REQUIREMENTS (PC's)

| | |
|-------------------|------------------|
| Voltage Regulator | 5000W Stabilizer |
|-------------------|------------------|

OTHER REQUIREMENTS (PC's)

| | |
|---------|-----------------------------------|
| Coolant | 10L Distilled Water (For Chiller) |
|---------|-----------------------------------|

1. Payment to be made in QR currency.
2. Payment Terms: As mentioned in Quotation.
3. Bank Details: -Bank Name: Qatar Islamic Bank
Branch: Al Khour Branch
Beneficiary Name: Digital Star Qatar
Acc #: (0111453200015)
Swift Code: (QISB - QAQA)
IBAN: QA16QISB000000000111453200015.
4. Bank Charges: Any bank charges relevant to the above transactions will be to your account.
5. Any charges, duties, taxes or levies at the ports of entry will be to our account.
6. The charges of lodging, boarding and local conveyance of the technician will be to our account.
7. Any required electrical, mechanical & civil site preparation should be done by the customer according to our engineer's requirements.
8. Digital Star Qatar will not be held responsible for delays caused by any damage in the equipment due to shipment, unloading accidents and any related reasons, which is beyond our control.
9. Warranty will be of 12 months from date of installation from Digital Star Qatar. Wear & tear, consumables are exempted and warranty can be claimed only if you use the services from Digital Star Qatar.
10. Service will be free of cost within 12 months from the date of installation.

TERMS & CONDITIONS

11. Any claim will be invoice directly to you then we will send for claiming procedure which will take 45-60 days, if the claim got approved credit note will issued directly.
12. Quotation will be valid for 7 days from here on.
13. Delivery: As mentioned in quotation



DIGITAL STAR QATAR ديجيتال ستار قطر

DOHA | QATAR | P O BOX: 47663

 +974 448 34 486

 info@digitalstarq.com

 +974 441 63 788

 www.digitalstarq.com